

# *The Town of Laurel Park*

OFFICIAL NEWSLETTER FOR THE TOWN OF LAUREL PARK

## **HURRICANE**

## **HELENE**

ON THURSDAY SEPTEMBER 26TH, WESTERN NORTH CAROLINA WAS HIT BY HURRICANE HELENE. HURRICANE HELENE HAS FOREVER CHANGED THE LANDSCAPE OF WESTERN NORTH CAROLINA; CAUSING MASSIVE TREES TO FALL ON HOMES AND CARS, DOWNED POWER LINES & POWER POLES, CATASTROPHIC LANDSLIDES AND FLASH FLOODING. THE MASSIVE STORM FIRST MADE LANDFALL AS A CATEGORY 4 HURRICANE IN NORTHERN FLORIDA. RIGHT BEFORE THE STORM REACHED THE WESTERN NORTH CAROLINA REGION, IT WAS DOWNGRADED TO A SEVERE TROPICAL STORM. HOWEVER, MANY RESIDENTS FEEL THE STORM WAS STILL A HURRICANE WHEN IT ENTERED WESTERN NORTH CAROLINA AREA. PRIOR TO TROPICAL STORM HELENE, LAUREL PARK, AND THE SURROUNDING AREA, HAD ALREADY RECEIVED A TORRENTIAL DOWNPOUR OF RAIN BY A PREVIOUS STORM SYSTEM. RESULTING IN RIVERS AND LAKES ALREADY POURING OVER THEIR BANKS.

ACCORDING TO THE NATIONAL WEATHER SERVICE, HENDERSON COUNTY RECEIVED 21.96 INCHES OF RAIN BETWEEN THE TWO STORM SYSTEMS OVER A THREE-DAY PERIOD. ADDITIONALLY, WIND SPEEDS OF A TYPICAL TROPICAL STORM RANGE FROM 39 TO 73 MPH. THE NATIONAL WEATHER SERVICE CLOCKED WIND GUSTS OF 55 MPH IN RUTHERFORD COUNTY AND 46 MPH IN BUNCOMBE COUNTY. MOUNT MITCHEL STATE PARK, HAVING THE HIGHEST ELEVATION EAST OF THE MISSISSIPPI, RECORDED WIND GUSTS OF 106 MPH. USA TODAY HAS STATED THAT HURRICANE HELENE IS THE 5TH DEADLIEST STORM IN AMERICA'S HISTORY, SINCE 1950.



ABOVE PHOTOS WERE TAKEN BY POLICE OFFICER ERICH JUNGER, SHOWING SOME OF THE DAMAGE LAUREL PARK RECEIVED FROM HURRICANE HELENE





## A MESSAGE FROM LAUREL PARK'S MAYOR

OCTOBER 10, 2024

DEAR LAUREL PARK RESIDENTS,

FIRST, AND FOREMOST, WE ARE ALL VERY GRATEFUL THAT THERE WAS NO LOSS OF LIFE IN LAUREL PARK DUE TO HURRICANE HELENE. DURING TIMES LIKE THESE A COMMUNITY'S STRENGTH IS TESTED, AND DESPITE THE WIDESPREAD DEVASTATION, LAUREL PARK HAS RISEN TO THE CHALLENGE. OUR TOWN MANAGER, CARA REEVES, ALONG WITH PUBLIC WORKS, POLICE OFFICERS, TOWN COMMISSIONERS AND MAYOR HAVE DRIVEN NEARLY EVERY ROAD IN TOWN TO ASSESS THE EXTENT OF DAMAGES. WHILE GREAT PROGRESS IS BEING MADE WITH TREE REMOVAL, OPENING OF ROADWAYS, WATER AND POWER RESTORATION, THERE IS MUCH MORE TO BE DONE.

BEFORE THE STORM EVEN HIT, YOUR GOVERNMENT HAS WORKED TIRELESSLY TO SUPPORT THE RESPONSE AND RECOVERY EFFORTS. THE MORNING AFTER THE STORM, YOUR PUBLIC WORKS DEPARTMENT AND FIRST RESPONDERS WERE OUT ASSESSING THE NEEDS OF RESIDENTS AND ENSURING THE SAFETY OF OUR BELOVED COMMUNITY. THAT SATURDAY MS. REEVES ON SITE COORDINATING WITH COUNTY PARTNERS TO OBTAIN VITAL RESOURCES FOR YOU. ON SUNDAY DEDICATED TOWN STAFF AND VOLUNTEERS OFFERED A CHARGING STATION AND DISTRIBUTED WATER TO RESIDENTS. THESE EFFORTS HAVE CONTINUED WITH THE ADDITION OF A HOT COFFEE STATION AND DISTRIBUTION OF MRES AT TOWN HALL.

A SPECIAL THANKS GOES OUT TO OUR PUBLIC WORKS, POLICE, AND ADMINISTRATIVE STAFF FOR THEIR LONG HOURS AND STRENUOUS WORK. COMMISSIONER DEB BRIDGES DESERVES OUR GRATITUDE FOR HER MANY HOURS AT TOWN HALL COORDINATING VOLUNTEERS. CARA REEVES TOO, DESERVES A SPECIAL THANK YOU. MRS. REEVES ONLY STARTED AS OUR TOWN MANAGER ON SEPTEMBER 1ST. WHAT A WELCOME!

LIKE ALL OF YOU, MY HEART IS HEAVY AS WE EMBARK ON THE NEXT PHASE OF THE DISASTROUS HURRICANE HELENE. WE KNOW THE PATH TO FULL RECOVERY WILL TAKE QUITE SOME TIME, BUT WE WANT YOU TO KNOW THAT, AS YOUR ELECTED BODY, WE ARE FULLY COMMITTED TO SEEING IT THROUGH ALONGSIDE YOU.

I'VE SPOKEN TO MANY RESIDENTS AND UNDERSTOOD THEIR CONCERNS. MY WIFE AND I FEEL VERY FORTUNATE; WE ARE HEALTHY AND SAFE, AND OUR POWER WAS RESTORED YESTERDAY. I'M VERY PROUD BUT NOT SURPRISED OF HOW EACH OF YOU HAVE RESPONDED TO THIS DISASTER AND WORKED TOGETHER AS A COMMUNITY.

STAY SAFE AND BLESSINGS TO YOU ALL!

CAREY O'CAIN  
MAYOR CAREY O'CAIN







## A MESSAGE FROM COMMISSIONER DEB BRIDGES

"STRENGTH DOES NOT COME FROM PHYSICAL CAPACITY. IT COMES FROM AN INDOMITABLE WILL."  
- MOHANDAS KARAMCHAND GANDHI, 1920

AT DAYBREAK ON FRIDAY, SEPTEMBER 27, 2024, LAUREL PARK RESIDENTS FOUND THEMSELVES IN THE CLUTCHES OF THE GREATEST NATURAL DISASTER IN THE HISTORY OF OUR BEAUTIFUL MOUNTAIN VILLAGE. AS THE HOURS PASSED AND THE WIND BEGAN TO DIE DOWN A BIT AND THE RAIN SUBSIDED, WE VENTURED OUT INTO FOREIGN TERRITORY. IT WAS BEYOND FRIGHTENING. IT WAS BEYOND HEARTBREAKING...IT WAS BEYOND ANYTHING MOST OF US HAD EVER WITNESSED.

AND THEN, SOMETHING TRULY REMARKABLE BEGAN TO HAPPEN...

NEIGHBORS REACHED OUT TO NEIGHBORS. NEIGHBORHOODS REACHED OUT TO OTHER NEIGHBORHOODS. FOLKS WHOSE HOMES WERE COVERED BY DOWNED TREES, UTILITY LINES, AND DEBRIS WERE OFFERED SHELTER AND A SAFE PLACE. CLUSTERS OF HOMEOWNERS AND RESIDENTS SHARED RESOURCES...FOOD, WATER, TOOLS, CELL PHONE SERVICE, HOTSPOTS, WI-FI, TRANSPORTATION, AND HELP WITH CLEARING ENTRY AND DRIVEWAYS. ONE KINDNESS LED TO ANOTHER AND THEN ANOTHER AND ANOTHER; AND THAT PATTERN CONTINUED TO PROPAGATE FROM THE BOTTOM TO THE TOP OF THE MOUNTAIN AND BACK DOWN AGAIN.

SO MANY OF YOU HAVE VOLUNTEERED AND ARE CONTINUING TO OFFER HELP IN LAUREL PARK'S RECOVERY. I'D LIKE ALL OF YOU TO KNOW (REGARDLESS OF WHATEVER YOU DID OR HOW MUCH YOU GAVE) THAT YOU HAVE RE-DEFINED THE PHRASE "MAKING A DIFFERENCE". THE DEPTH OF YOUR CARING, COMPASSION, AND ESPECIALLY YOUR INEXHAUSTIBLE DETERMINATION IS IMMEASURABLE. IT HAS BEEN (AND CONTINUES TO BE) THE MOST PROFOUND RECOVERY EFFORT I HAVE EVER KNOWN. YOUR INDOMITABLE WILL IS OUR STRENGTH.

- COMMISSIONER DEB BRIDGES -



PHOTO TO THE LEFT IS OF LAUREL PARK'S JUMP OFF ROCK







**A SPECIAL THANK YOU TO ALL OF  
LAUREL PARK'S TOWN  
EMPLOYEES AND VOLUNTEERS  
DURING THIS DIFFICULT TIME**



**LAUREL PARK POLICE:**

- CHIEF BOBBIE TROTTER
- ASSISTANT CHIEF MICHAEL CAPPS
- OFFICER KEVIN SWANSON
- OFFICER ERICH JUNGER
- OFFICER BRANDON MAYNARD
- OFFICER DABRIOUS WILLIAMS
- OFFICER DANIEL ELLIOT
- OFFICER PHILIP RAMACKERS

**PUBLIC WORKS:**

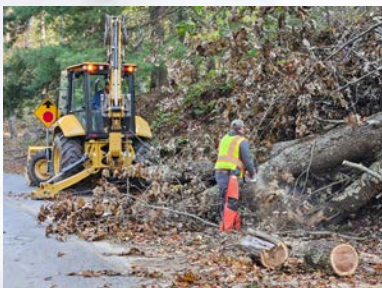
- BRANDON JOHNSON
- MATTHEW PEARCE
- BRYAN HENSLEY
- THOMAS BINGHAM
- DANIEL WATSON
- ALEXANDER CASTEEL
- JIM CONKLIN
- JODY JUSTICE

**TOWN HALL:**

- MAYOR CAREY O'CAIN
- COMMISSIONER DEB BRIDGES
- COMMISSIONER PAUL HANSEN
- COMMISSIONER GEORGE BANTA
- COMMISSIONER KRISTIN DUNN
- TOWN MANAGER CARA REEVES
- TOWN CLERK TAMARA AMIN
- RESIDENT SERVICES REPRESENTATIVE JESSICA MARCHEL

**LAUREL PARK  
VOLUNTEERS:**

- JOYCE BEST
- JENNY BROWN
- SALLY BUCHHOLZ
- SUZIE PETSCHOW
- MICHAEL SPRATELY
- MARSHA MANI
- ANDREW JOHNSON
- ANN MCFADDEN
- DAN WILSON
- PAT LASALLE
- MARK MORSE
- TALMADGE REEVES
- GINGER ZEMP
- TIM MEADOWS
- ECHO MOUNTAIN INN STAFF MEMBERS





# RESOURCES FOR DAMAGES CAUSED BY HURRICANE HELENE (PART 1)

## FEMA ASSISTANCE

IF YOU HAVE NOT ALREADY DONE SO YOU CAN STILL APPLY FOR FEMA INDIVIDUAL ASSISTANCE!

### MULTIPLE WAYS TO APPLY:

REGISTERING ONLINE AT  
**WWW.DISASTERASSISTANCE.GOV**  
 CALLING TOLL-FREE TO  
**800-621-FEMA (3362)**  
 (BETWEEN 7 A.M. AND 10 P.M.)

APPLYING FOR FEDERAL ASSISTANCE DIRECTLY THROUGH THEIR WEB ENABLED MOBILE PHONE DEVICES OR SMARTPHONES.  
 VISIT **M.FEMA.GOV** AND FOLLOW THE LINK TO **WWW.DISASTERASSISTANCE.GOV** TO APPLY FOR FEDERAL ASSISTANCE.

IF YOU NEED HELP COMPLETING THE APPLICATION, **PISGAH LEGAL SERVICES** IN HENDERSONVILLE IS OFFERING FREE HELP.

**WWW.PISGAHLEGAL.ORG/FEMA**  
**440 S CHURCH ST, HENDERSONVILLE, NC 28792**  
**(828) 692-7622**

## STORM DEBRIS CLEAN UP

HENDERSON COUNTY WILL BE PICKING UP ALL STORM DEBRIS. PLEASE REFER TO DIAGRAM BELOW ON HOW TO PROPERLY ORGANIZE STORM DEBRIS



**DUE TO STAFF SHORTAGE AND THE NEED FOR CLEAN UP AFTER HURRICANE HELENE, LAUREL PARK'S PUBLIC WORKS WILL NOT BE PICKING UP BAGGED LEAVES AND OR BRUSH, UNTIL FURTHER NOTICE. YOU MAY BRING BAGGED LEAVES AND OTHER YARD WASTE TO THE PUBLIC WORKS BUILDING: 500 TOMS DRIVE**

**CRISIS CLEANUP**

## HURRICANES HELENE & MILTON CLEANUP HOTLINE

**(844) 965-1386**

If you need help cleaning up damage from the Hurricanes Helene & Milton, call (844) 965-1386 to ask for help. We will connect you with volunteers from local relief organizations, community groups and faith communities who may be able to assist with:

Muck Out   
  Trees   
  Tarp   
  Debris

All services are free, but service is not guaranteed due to the overwhelming need. This hotline will remain open through Friday, November 1, 2024.

(844) 965-1386

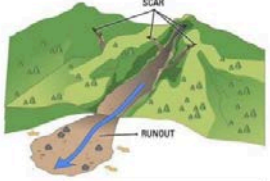
PLEASE NOTE: this hotline CANNOT assist with social services such as food, clothing, shelter, insurance, or questions about FEMA registration. Volunteers work free of charge and provide the tools and equipment necessary to complete the work.



# RESOURCES FOR DAMAGES CAUSED BY HURRICANE HELENE (PART 2)

**LANDSLIDE SAFETY**  
If your home or property was damaged by a landslide from Hurricane Helene, be aware of the warning signs of future landslide activity.

**WATCH FOR WARNING SIGNS**  
Signs a landslide may be moving include:  
 ✓ Cracks forming at the top of the scar  
 ✓ New springs of water on the landslide scar  
 ✓ Increased dirt, sand, and rocks tumbling down the slope  
 If you see one or more of these warning signs, talk to a local geotechnical consultant.



**PAY ATTENTION TO THE WEATHER**  
Heavy or prolonged rainfall, rain falling on snow, or seasonal snowmelt can cause a landslide to move again or possibly trigger new landslide activity.

**HOW TO KNOW A LANDSLIDE IS COMING**

**FEEL**  
Landslides are noisy and can cause the ground to shake and feel like a freight train is passing.

**HEAR**  
 - CRACKING WOOD  
 - FALLING TREES  
 - SHAKING BRUSH  
 - KNOCKING ROCKS  
 - SOUNDS LIKE A LOW-FLYING JET

**SEE**  
 ✓ **MUDDY WATERS**  
If a creek suddenly becomes muddier it could mean a large amount of dirt and new material has entered upstream.  
 ✓ **NO STREAMFLOW**  
If a stream stops flowing it could mean the channel was blocked by debris, creating a natural dam. If the dam fails, all the stored material could rush downstream.

**LANDSLIDE THREAT - TAKE ACTION**

**AT HOME**  
If you are in a single-story house, climb onto a kitchen counter, desk, or sturdy table and hold on.  
If there is a second story to your home, go upstairs. Move toward the downhill side of the house. The landslide could push through windows on the uphill side.  
If outdoors, run away from the sound to the right or left, avoid going uphill or downhill. Landslides quickly travel downhill and are much faster than you.

**OUTSIDE**

Version 1.1  
October 28, 2024

HENDERSON COUNTY IS COLLECTING INFORMATION ON PRIVATE ROADS THAT HAVE BEEN DAMAGED FROM HURRICANE HELENE. IF YOU WOULD LIKE TO SUBMIT YOUR PRIVATE ROAD DAMAGE, SCAN THE QR CODE TO THE RIGHT OR GO TO THE WEBSITE LISTED BELOW:

[WWW.HENDERSONCOUNTYNC.GOV/HELENE](http://WWW.HENDERSONCOUNTYNC.GOV/HELENE)

**Private Road Damage Information Form**

Henderson County is collecting information from residents on private road damage caused by Hurricane Helene.

Data will be shared with NC Emergency Management and FEMA as they continue to evaluate the need to assist with repairs to private bridges and roads.

**Note:** This form is only to collect information. It does not constitute a guarantee of repair or financial assistance.

Scan for form:



## FREE WELL WATER TESTING FOR HENDERSON COUNTY RESIDENTS

THE HENDERSON COUNTY DEPARTMENT OF PUBLIC HEALTH IS PROVIDING FREE WELL WATER SAMPLING AT NO CHARGE TO HENDERSON COUNTY RESIDENTS IMPACTED BY HURRICANE HELENE. TESTING IS ONLY NEEDED IF YOU BELIEVE THE STORM FLOODED OR DAMAGED YOUR WELL. ANY WELL THAT SUSTAINED STRUCTURAL DAMAGE WILL ALSO NEED TO BE DISINFECTED AND TESTED BEFORE USE. BEFORE REQUESTING WELL WATER SAMPLING, PLEASE MAKE SURE THAT POWER HAS BEEN RESTORED, WELL HAS BEEN DISINFECTED, AND THE PROPERTY AND WELLHEAD ARE ACCESSIBLE. TO REQUEST WELL WATER TESTING CALL (828) 694-6060.

*Stay Informed*



**Join Blackboard Connect**

Blackboard Connect is how the Town of Laurel Park keeps its residents informed of the fun stuff going on in town, as well as the bad stuff.

Sign up to receive a text, email or landline call from our automated service and you'll know about:

- WEATHER EMERGENCIES
- HOLIDAY CLOSURES
- TRASH DAY DELAYS
- LOCAL ROAD CLOSURES
- LOCAL CONCERTS IN THE PARK
- SPECIAL EVENTS
- CANCELLATION NOTIFICATIONS

To sign up, go to our [Laurelpark.org](http://Laurelpark.org) homepage or <https://laurelparknc.bbcportal.com/>

## AIRPLANE NOISE

HAVE YOU HEARD ANY OF THE AIRPLANES THAT FLY OVER LAUREL PARK? IF YOU FEEL THAT THE NOISE IS BOTHERSOME, PLEASE CONTACT LAUREL PARK'S TOWN HALL (828) 693-4840 OR CUSTOMERSERVICE@LAURELPARK.ORG. WE WOULD LIKE TO KNOW THE TOTAL NUMBER OF RESIDENTS WHO PREFER TO **NOT** HEAR AN AIRPLANE FLY OVER THEIR HOME(S). SO WE MAY CONTACT THE AIRPORT IN HOPES TO CHANGE THE PLANES FLIGHT PATTERN, TO NOT FLY OVER LAUREL PARK. THANK YOU FOR LETTING US KNOW.







**SAFETY FIRST!**



**PORTABLE GENERATOR SAFETY TIPS**

PORTABLE GENERATORS ARE USEFUL WHEN TEMPORARY OR REMOTE ELECTRIC POWER IS NEEDED, BUT THEY CAN BE HAZARDOUS. THE PRIMARY HAZARDS TO AVOID WHEN USING A GENERATOR ARE CARBON MONOXIDE (CO) POISONING FROM THE TOXIC ENGINE EXHAUST, ELECTRIC SHOCK, FIRE AND BURNS.



FOR MORE INFORMATION OR QUESTIONS, CONTACT VALLEY HILL FIRE RESCUE: FIRE AND LIFE SAFETY OFFICER CHRIS MCDOWELL 828-692-2581 EXT 105

**HERE ARE SOME SAFETY TIPS TO KEEP IN MIND WHEN USING A GENERATOR:**

- NEVER USE A GENERATOR INSIDE HOMES, GARAGES, CRAWL SPACES, SHEDS OR SIMILAR AREAS.
- FOLLOW THE INSTRUCTIONS THAT COME WITH YOUR GENERATOR.
- POSITION THE GENERATOR FAR AWAY FROM WINDOWS, DOORS, VENTS, CRAWL SPACES AND LOCATE IT IN AN AREA WHERE ADEQUATE VENTILATION IS AVAILABLE.
- NEVER ADD FUEL WHILE THE GENERATOR IS RUNNING OR HOT.
- MANY GENERATOR PARTS ARE HOT ENOUGH TO BURN YOU, AVOID COMING INTO CONTACT.
- DO NOT CONNECT YOUR GENERATOR DIRECTLY TO YOUR HOME'S WIRING OR INTO A REGULAR HOUSEHOLD OUTLET.
- PLUG INDIVIDUAL APPLIANCES INTO THE GENERATOR USING HEAVY-DUTY OUTDOOR-RATED CORDS THAT ARE ADEQUATE FOR THE APPLIANCE LOAD.
- DO NOT USE EXTENSION CORDS WITH EXPOSED WIRES OR WORN SHIELDING.



**FRAUD WARNING: STAY ALERT!**

DURING DEVASTATING TIMES, WE BECOME MORE VULNERABLE TO FRAUD AND SCAMS. THE LAUREL PARK POLICE DEPARTMENT WANTS TO MAKE YOU AWARE OF AN INCREASE IN CREDIT CARD FRAUD.

**HERE ARE IMPORTANT STEPS TO PROTECT YOURSELF:**

1. MONITOR YOUR ACCOUNTS: REGULARLY CHECK YOUR BANK AND CREDIT CARD STATEMENTS FOR UNAUTHORIZED TRANSACTIONS.
2. BE CAUTIOUS ONLINE: AVOID SHARING PERSONAL INFORMATION ON UNSECURED WEBSITES OR WITH UNKNOWN PARTIES.
3. REPORT IMMEDIATELY: IF YOU NOTICE ANY SUSPICIOUS ACTIVITY, CONTACT YOUR CREDIT CARD ISSUER RIGHT AWAY.
4. USE STRONG PASSWORDS: CREATE COMPLEX PASSWORDS AND CHANGE THEM REGULARLY.
5. ENABLE TWO-FACTOR AUTHENTICATION: THIS ADDS AN EXTRA LAYER OF SECURITY TO YOUR ACCOUNTS.

STAY VIGILANT AND PROTECT YOUR FINANCIAL INFORMATION. YOUR AWARENESS CAN HELP PREVENT FRAUD! PLEASE CONTACT THE LPPD AT 828-697-3025 IF YOU BELIEVE ANY SUSPICIOUS ACTIVITY HAS TAKEN PLACE.



TOWN OF LAUREL PARK

YOU ARE INVITED

**EVENT POSTPONED**

*State of the Town Dinner*

MARCH 1, 2025 @ 6 PM  
HENDERSONVILLE COUNTRY CLUB

If the new date does not work out, please contact Town Hall @ 828-693-4840 to request a refund.





# HAPPY HALLOWEEN



LAUREL PARK'S POLICE DEPARTMENT DID AN EXCELLENT JOB OF THIS YEAR'S TRUNK OR TREAT ON OCTOBER 26TH IN LAUREL GREEN PARK! THANK YOU TO EVERYONE WHO ATTENDED AND DONATED CANDY! SPECIAL THANK YOU TO LAND OF SKY & FRIENDS OF LAUREL PARK FOR HELPING GIVE OUT CANDY TO OUR TRICK OR TREATERS!



LAUREL PARK'S TOWN HALL STAFF & POLICE DEPARTMENT & CELEBRATING HALLOWEEN!



ABOVE IS CHIEF OF POLICE, BOBBI DRESSED UP AS ASSISTANT CHIEF OF POLICE CAPPS



ABOVE IS TOWN HALL'S RESIDENT SERVICES REPRESENTATIVE, JESSICA, DRESSED UP AS WEDNESDAY ADDAMS



ABOVE IS TOWN MANAGER, CARA, AND TOWN CLERK, TAMARA, DRESSED UP AS SATURDAY NIGHT LIVE "TIGHT PANTS" SKIT





## FRIENDS OF LAUREL PARK

FRIENDS OF LAUREL PARK HAD THEIR LAST CONCERT OF THE YEAR AT LAUREL GREEN PARK, ON OCTOBER 11TH. IT WAS A WONDERFUL EVENT WITH LIVE MUSIC AND FOOD TRUCKS! THANK YOU FRIENDS OF LAUREL PARK!



MAKE SURE TO FOLLOW THEM ON FACEBOOK OR GO TO THEIR WEBSITE

[WWW.FRIENDSOFLAURELPARK.ORG](http://WWW.FRIENDSOFLAURELPARK.ORG)

## LAUREL PARK VOLUNTEER GARDENING

WE KNOW THAT ALL THE OPEN SPACE & PARKS IN LAUREL PARK (AS WELL AS OUR OWN YARDS) NEEDS ATTENTION RIGHT NOW. LEAF PICKUP, PERENNIAL TRIMMING, AS WELL AS LEFTOVERS FROM HELENE.

### VOLUNTEER GARDENING DAYS:

11/12/24 @ 10 AM

11/19/24 @ 10 AM

DECEMBER REMAINS TO BE DECIDED.

- JUDY LYONS & JOE ROBUSTELLI -

EFFECTIVE TUESDAY, OCTOBER 29, 2024:

### FALL 2024 - Voting Dates / Times - EARLY and ELECTION DAY

2024 EARLY VOTING is at ONE EARLY VOTING LOCATION through Monday 10/28 at the BOARD OF ELECTIONS Office at 75 E CENTRAL ST. - HENDERSONVILLE, NC 28792 → <a href="https://www.hendersoncountync.gov/sites/default/files/attachments/elections/page/135581/box1.pdf">https://www.hendersoncountync.gov/sites/default/files/attachments/elections/page/135581/box1.pdf</a>			
EARLY VOTING DATES AND HOURS:			
DAY	DATE	OPEN TIME	CLOSE TIME
~ Early voting began Oct. 17 at Bd of El and continues there ~			
Friday	10/25/24	8:00 am	7:30 pm
Saturday	10/26/24	-closed-	
Monday	10/28/24	8:00 am	7:30 pm



EFFECTIVE TUESDAY, OCTOBER 29, 2024 - Early Voting is at 4 sites:

Bd of Elections	Etowah Library	Fletcher Town Hall	NC Justice Academy
Tuesday	10/29/24	8:00 am	7:30 pm
Wednesday	10/30/24	8:00 am	7:30 pm
Thursday	10/31/24	8:00 am	7:30 pm
Friday	11/1/24	8:00 am	7:30 pm
Saturday	11/2/24	8:00 am	3:00 pm

~ 2024 GENERAL ELECTION DAY ~

Tuesday, November 5, 2024 from 6:30 am - 7:30 pm

WHERE DO YOU VOTE on Nov. 5? At YOUR PRECINCT

WHERE IS YOUR PRECINCT? Call 828-697-4970

OR use link below or OR... scan this code →

<https://hondemobilepolling.mms.acropolis.com/nc/elections/where/indiv.html?id=c6129295a527fa30c18f961e843a7>

QUESTIONS? CALL the Board of Elections: 828-697-4970

<https://www.hendersoncountync.gov/elections>



REMEMBER → TAKE YOUR ID



ATTENTION LAUREL PARK RESIDENTS!!!  
REPORT STORM DEBRIS DAMAGE FOR PICK UP TO THE COUNTY BY SCANNING THE QR CODE BELOW

### Report Storm Debris for Pickup



Have storm debris ready for curbside pickup? Let us know where.

Scan:



COMPLETING THE ABOVE SURVEY WILL HELP HENDERSON COUNTY DETERMINE WHERE STORM DEBRIS PICK UP IS NEEDED & HOW TO DELEGATE RESOURCES EFFICIENTLY!



**LAUREL PARK ADVISORY  
BOARDS OPPORTUNITIES**

THE TOWN OF LAUREL PARK  
RECOGNIZES & CELEBRATES THE  
DIVERSITY OF OUR TOWN AND  
ENCOURAGES ALL INDIVIDUALS TO  
APPLY TO SERVE ON BOARD-APPOINTED  
COMMITTEES. THE TOWN OF LAUREL  
PARK IS ACCEPTING APPLICATIONS FOR  
THE FOLLOWING VACANCIES:

- 3- BOARD OF ADJUSTMENT MEMBERS
- 2 - BOARD OF ADJUSTMENT ETJ MEMBERS
- 2 - PLANNING BOARD MEMBERS
- 1 - PLANNING BOARD ETJ MEMBER
- 1 - CENTENNIAL COMMITTEE
- 3 - PARKS AND GREENWAYS MEMBERS
- 9 - COMPREHENSIVE PLAN STEERING COMMITTEE (NEW ADVISORY BOARD!)

TO APPLY, PLEASE CONTACT TOWN  
CLERK TAMARA AMIN  
([TAMIN@LAURELPARK.ORG](mailto:TAMIN@LAURELPARK.ORG)) OR VISIT  
[WWW.LAURELPARK.ORG/GOVERNMENT/  
ADVISORY-BOARDS](http://WWW.LAURELPARK.ORG/GOVERNMENT/ADVISORY-BOARDS)

**LAUREL PARK  
EMPLOYMENT  
OPPORTUNITIES**

- FINANCE OFFICER
- ASSISTANT TO THE TOWN MANAGER / ZONING ADMINISTRATOR
- POLICE OFFICER
- PARKS / STREETS MAINTENANCE TECHNICIAN
- STREETS MAINTENANCE TECHNICIAN

TO APPLY, PLEASE GO TO  
[WWW.LAURELPARK.ORG/DEPARTMENTS  
/EMPLOYMENT](http://WWW.LAURELPARK.ORG/DEPARTMENTS/EMPLOYMENT)



IT IS WITH GREAT SADNESS THAT WE SHARE WITH OUR  
LAUREL PARK COMMUNITY, TWO WONDERFUL  
RESIDIANTS HAVE PASSED AWAY.

PAMELA KNIGHT SACCO, MUSICIAN,  
PHILANTHROPIST, ARDENT  
VOLUNTEER, AND GENEROUS PERSON  
PASSED AWAY AT HER HOME ON  
OCTOBER 16TH, 2024 FROM NATURAL  
CAUSES. SHE SERVED ON THE  
CENTENNIAL COMMITTEE FOR THE  
TOWN OF LAUREL PARK.



ROBERT . "BOB" VICKERY  
PASSED AWAY ON OCTOBER 13TH,  
2024, AFTER AN EXTENDED ILLNESS.  
HE WAS A 1965 GRADUATE OF  
CLEMSON SCHOOL OF ARCHITECTURE  
AND SPENT HIS CAREER IN DESGIN  
AND CONSTRUCTION. BOB AND HIS  
WIFE, KAY LIVED IN LAUREL PARK  
FOR 25 YEARS. HE SERVED ON  
LAUREL PARK'S TOWN COUNCIL FOR  
12 YEARS & THE PLANNING BOARD,  
PRIOR TO BEING ON THE TOWN  
COUNCIL.



*Thank You for Your Service*



# CALENDAR

November 1

November 11

November 26

November 28-29

November 29

December 24-26

January 1



CLOSED

CLOSED



Town Hall Closed @ 2 pm for Staff Training

Town Hall Closed for Observation of Veteran's Day

Town Hall Closed for Staff Training

Town Hall Closed for the Thanksgiving Holiday

Trash Pickup the 29th instead of the 28th

Town Hall Closed for Christmas Holiday

Town Hall Closed for New Years Holiday

## Public Meeting Schedule

(Please check back on our website for up-to-date meeting changes prior to attending)

### Town Council Work Session

November 14 @ 9:30 am

December 12 @ 9:30 am

### Town Council Regular Meeting

November 19 @ 9:30 am

December 17 @ 9:30 am

### Planning Board

November 12 @ 3:00 pm

December 10 @ 3:00 pm

### Board of Adjustment

November 14 @ 4 pm

### Parks & Greenways Board

November 12 @ 9:30 am

December 10 @ 9:30 am

### Parks & Greenways Site Meeting

November 28 - CANCELLED For Thanksgiving Holiday

December 26 - CANCELLED For Christmas Holiday

### Invasive Species committee

November 6 @ CANCELLED

December 4 @ 10:00 am

### Centennial Committee

November 18 @ 11:30 am

December 9 @ 11:30 am

### Bee Committee

November 19 @ 4:30 pm

December 17 @ 4:30 pm

### Bicycle Committee

December 9 - Cancelled

### Town Contact Information

Town Hall (828) 693-4840  
9:00 am – 5:00 pm Mon - Fri

Police Non Emergency (828)692-9399

Valley Hill Fire (828) 692-2581



**Town Manager:** Cara Reeves

**Town Clerk:** Tamara Amin

**Police Chief:** Bobbie Trotter

**Public Works Director:** Brandon Johnson



**Mayor:** J. Carey O’Cain

**Mayor Pro-Tem:** A. Paul Hansen

**Commissioners:**

George W. Banta

Kristin Dunn

Debra Hinson Bridges